

DRONE SURVEY & MAPPING INSURANCE

REDUCE RISK | IMPROVE EFFICIENCY | INCREASE CREDIBILITY

The insurance industry is one of the earliest adopters of drone technologies. Incorporating drone surveys supports the insurance value chain by documenting assets, improving inspection accuracy & reporting, measuring losses and assessment of risks. By aiding transaction processing and enhancing your resource efficiency will increase Gaining you credibility while saving substantial amounts of time and money!

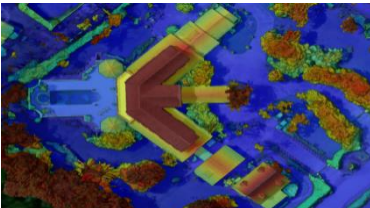
DRONES ARE INVALUABLE TO THE INSURANCE INDUSTRY



STREAMLINE OPERATIONS AND IMPROVE DECISION MAKING

1. IMPROVE ASSESSMENT OF RISKS

- Ability to reach inaccessible areas and factor adjacent risks & hazards
- Survey measurement tools: calculation of dimensions, elevations & issues
- Estimates: site documentation (maps, photos, panoramas, videos, reports)



2. FASTER CLAIMS PROCESSING

- Site planning: safety, accessibility and logistics
- Inspections: scale of impacts and real time damage assessments
- Identify issues and repairs: progress tracking, annotation & reporting tools
- Transaction processing time: improves overall efficiency



3. REDUCE FRAUD AND LIABILITIES

- Inspections efficiency: accuracy, timeliness, causes of loss
- Liability and warranty fulfillment: site maps, 3D models, videos and photos
- Ability to safely and quickly investigate inaccessible or dangerous areas

LET'S TALK ABOUT YOUR DRONE NEEDS TODAY

Dr. Kimberly Baldwin, Director
marsis.solutions@gmail.com
www.marsis.us



People | Technology | Information