

DRONE SURVEY & MAPPING CONSTRUCTION

REDUCE RISK | IMPROVE EFFICIENCY | INCREASE CREDIBILITY

The construction sector is the largest commercial user of drone technologies today! Comprehensively map and record activities throughout the lifecycle of your project.

Site plans can be overlain on your drone survey results allowing your team to plan, discuss, monitor and share 'real-time' progress with your customers.

Drone surveys significantly reduce human risk & errors performing site inspections besides offering substantial reductions in time and labor costs.

PROVIDING SUPPORT FROM PROCUREMENT TO COMPLETION

STREAMLINE YOUR OPERATIONS AND IMPROVE DECISION MAKING

1. PRE-BID AND PRE-CONSTRUCTION

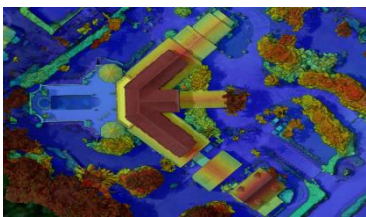
- Estimates & Bid Process: baseline surveying and concept design
- Site Design Maps: aerial photos, elevation models and measurement tools
- Procurement: Precision planning and budgeting, final site plan overlays

2. DURING CONSTRUCTION

- Site Planning: Safety, logistics, track site inventory and transportation
- Earthworks: 3D measurements (area, distance, cut/fill, stockpile volumes)
- Tracking Progress: Compare site changes, as-design to as-built, flag issues

3. INSPECTIONS AND CLOSE-OUT

- Inspection Reporting Tools: Buildings, roofs, solar panels and HVAC units
- Marketing/Presentations: 3D Models as-builts, panorama, videos, photos
- Warranty: Fulfillment and liability accounting
- Landscaping: Design plans, flooding elevation models and monitoring



LET'S TALK ABOUT YOUR DRONE NEEDS TODAY

Dr. Kimberly Baldwin, Director
marsis.solutions@gmail.com
www.marsis.us



People | Technology | Information